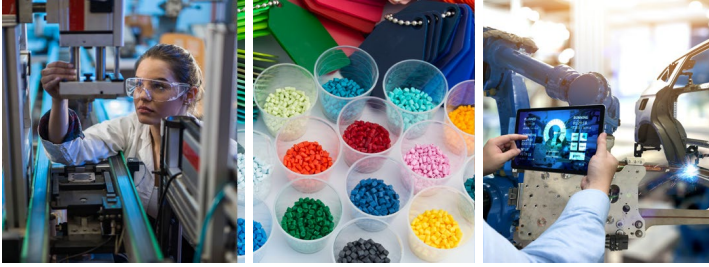


Arsenal Capital Partners is a specialized private equity firm with a deep focus in two sectors, industrial growth and healthcare. Through deep market immersion and technological expertise in these sectors, we discern market needs and growth drivers to identify what we believe are the most attractive markets and sub-sectors to apply our strategy.

## Target Areas of Focus

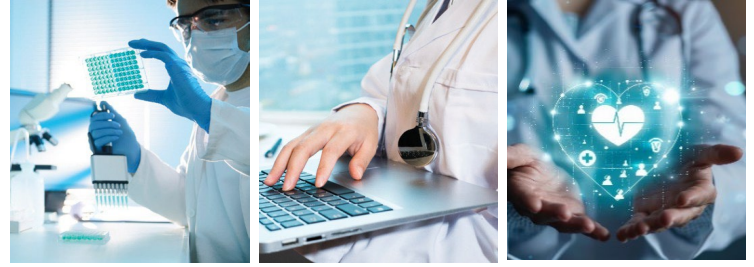


### Industrial Growth

Industrial technology businesses that provide solutions to meet the growing demand for improved functionality, efficiency, and performance.

Sub-sectors of interest:

- **Innovative Materials**
  - Coatings, adhesives, sealants, and elastomers
  - Engineered resins and sustainable solutions
  - Engineered materials and systems
- **Industrial Technologies**
  - Automated solutions
  - Test, measurement, and monitoring
  - Tech-enabled services



### Healthcare

Businesses that improve the efficiency and efficacy of the healthcare industry and thereby, patient outcomes.

Sub-sectors of interest:

- **Pharma Services**
  - Clinical research services
  - Commercial enablement solutions
- **Healthcare Technology and Services**
  - Clinical and economic optimization
  - Employer health technology
  - Specialty pharmacy enablement

## Overview

# 25

Year track record

# 320+

Platform and add-on acquisitions

# \$10bn\*

AUM

# \$5.4bn

New capital raised

## Deep, High Impact Team

- Differentiated investment, industry, and operating expertise

# 105+

Professionals

# 55+

Senior advisors

## Investment Criteria

- Currently investing Fund VI (\$4.3bn) and the Small Cap Fund (\$1.1bn)
- Control or growth equity investments
- Capable of deploying \$40mm–\$500mm+ of equity
- Platform businesses from \$15mm of revenue to \$100mm of EBITDA

\* As of December 2024

# Current Portfolio Companies

## Industrial Growth



**Applied Adhesives** is a value-added distributor of adhesive products.



**Chroma Color Corporation** is a supplier of color concentrates and additives for plastics.



**Fralock** is a provider of specialty engineered polymer components and films.



**Meridian Adhesives** is a global manufacturer of adhesives and sealants.



**Polytek** is a formulated polymer technology platform.



**ATP Adhesives Systems** manufactures high-performance, water-based tapes.



**CPS Performance Materials** is a manufacturer of diversified performance polymers.



**Headwall** provides hyperspectral imaging components, systems, and insights.



**Polycorp** designs and manufactures engineered elastomer solutions.



**Revolution** is a sustainable-loop manufacturer of post-consumer and post-industrial resin.



**AvCarb** manufactures advanced materials serving renewable energy technologies.



**Fenzi** provides glass processing technologies and solutions.



**Invio** provides advanced engineered automation solutions and services.



**Polywood** is a manufacturer of recycled, HDPE outdoor living products.

## Healthcare



**3DR Labs** is a provider of technology-enabled outsourced imaging solutions for radiology departments.



**Endpoint** is a randomization and trial supply management software. **Neovance** provides hub services to pharma customers.



**Knowtion** provides tech-enabled revenue cycle insurance claim resolution services.



**OncoHealth** provides digital health solutions focused on oncology.



**CellCarta** provides immune therapy and biologic drug development services.



**Epic Sciences** provides liquid biopsy diagnostics in oncology.



**Lumany** provides value demonstration and commercialization services for biopharmaceutical companies.



**Rancho Biosciences** provides tech-enabled data science services to pharma.



**Certara** is a biosimulation software and technology to transform drug discovery and development.



**Hopebridge** provides autism treatment services.



**MaxHealth** is a risk-based primary care platform.



**WCG Clinical Services** provides clinical trial optimization services.

## Realized Investments

